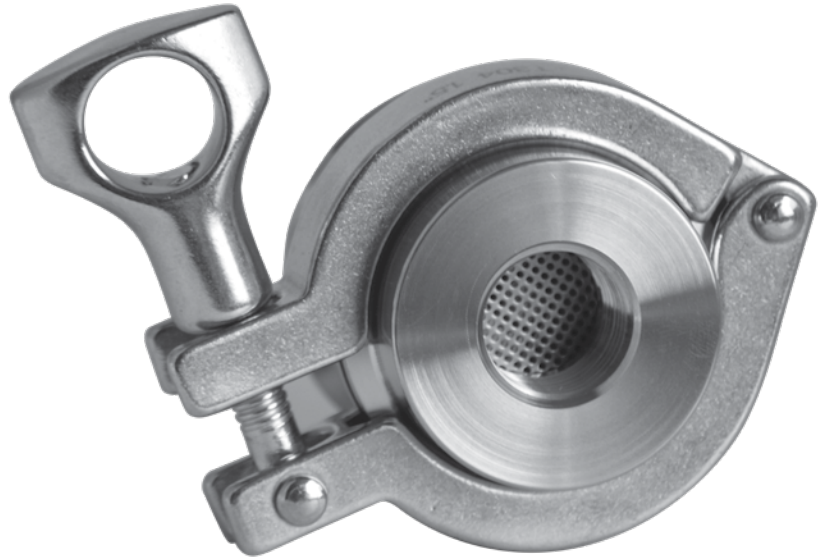


TOP-FLO® Air Blow Check Valves

TOP-FLO® 62-174R Air Blow Check Valves are designed to evacuate lines of product or CIP solution, and for air agitation of product in tanks and other vessels.

- The valve helps to protect pipelines against corrosion - air drying of lines permits formation of the protective oxide film.
- Improves product uniformity and quality - product air agitation thoroughly mixes and blends product.



Features:

- Fail Safe Operation - backflow of product or CIP solution prevented by simple air to open, spring to close operation.
- Easy Assembly/Disassembly - connections permit quick disassembly and assembly for replacing filter media, cleaning or inspection. Quick couple or FNPT air connection.
- EPDM stopper
- Clamp sizes 1-1/2 - 4"
- All 316L SS body construction
- Remotely Controlled - can be remotely controlled by controlling the supply of air to the valve.
- Rugged Construction - type 316L stainless steel is standard. Spherical plug assembly is bonded EPDM rubber.
- Conforms to 3-A accepted practices - for applications requiring a final filtering of air prior to entering a tank or pipelines.

Specifications:

Capacity to 1600 CFH air volume

PART NUMBER MATRIX

OUTLET CONNECTION / MATERIAL		CLAMP SIZE		STOPPER ELASTOMER		INLET CONNECTION		VALVE SERIES	
3846	SANITARY CLAMP - 316LSS	15	1 1/2"	0	FDA EPDM	1	QUICK COUPLE ADAPTER	174	62-174R CHECK VALVE
		20	2"			2	1" HOSE BARB		
		25	2 1/2"			3	3/8" FNPT		
		30	3"			4	1/2" FNPT		
		35	3" SCH5			5	3/4" FNPT		
		40	4"			6	1/4" FNPT		
		45	4" SCH5						

PART NUMBER EXAMPLE:
38463003174

TOP-FLO® 3" 62-174R Air Blow Check Valve, 3/8" Fmpt Inlet X Clamp Outlet, FDA EPDM Stopper, PTFE Guide, 32R_a ID, 316L



Always Giving You
Top of the Line Service
and Quality

Contact your Top Line Representative for Assistance

Office: P.O. Box 264 · Bradford, PA 16701

Plant: 21 Valley Hunt Drive · Lewis Run, PA 16738

800-458-6095

814-362-4626

Fax: 814-362-4453

Top Line is a leading supplier of sanitary stainless steel process equipment. Serving the food, beverage, dairy, pharmaceutical, biotechnological and personal care industries. For over 50 years we've provided our customers with exceptional customer service and quality products. We are committed to meeting the fastest delivery, new product development and application engineering to meet all our customer's needs with our extensive inventory and expert sales team.

Top Line specializes in stainless steel materials – type 304 and 316L. Our modern, well equipped manufacturing facilities are staffed by skilled and dedicated craftsmen. Consistently meeting important tolerances and finish specifications is of primary concern to us. Before any products leave our plant they are subjected to rigid quality assurance checks.

Top Line should always be considered your first choice for both standard and custom fabricated stainless steel products.

Limited Warranty

Top Line Process Equipment Company products are warranted to be free of defects in material or workmanship for a period of one year from date of shipment. Warranty covers those Top Line products used in an approved installation and maintained in strict accordance with recognized standard industry practice. If, after properly authorized return, Top Line determines that products are defective, Top Line may at its option, repair or replace such defective products.

Top Line shall not be liable for consequential, indirect or incidental damages. The above warranty is in lieu of all other warranties, expressed or implied.

www.toplineonline.com