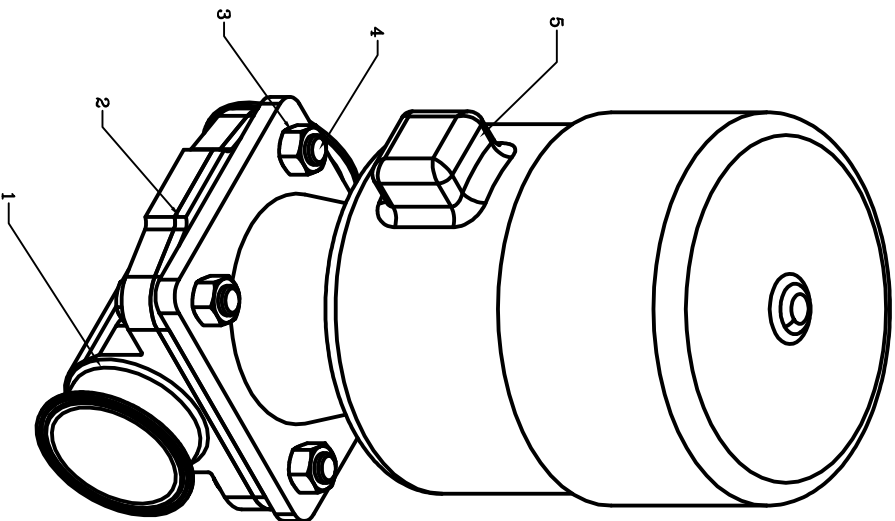
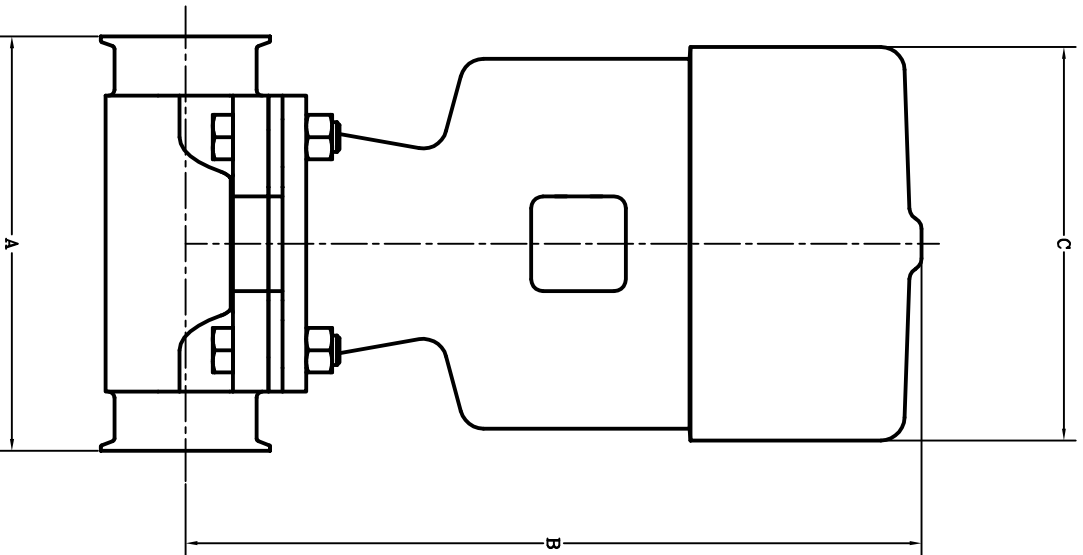


| ITEM | PART No | DWG No. | QTY | DESCRIPTION | SPECIFICATIONS |
|------|---------|---------|-----|--|-----------------------|
| 1 | PART No | - | 1 | BODY TRI-CLAMP | STAINLESS STEEL 316-L |
| 2 | PART No | - | 1 | DIAPHRAGM | AS SPECIFIED |
| 3 | PART No | - | 4 | HEX NUT $\phi 5/8-11UNC$ | MONEL |
| 4 | PART No | - | 4 | HEX BOLT $\phi 5/8-11UNC \times 2 1/4" LG$ | STAINLESS STEEL 316 |
| 5 | PART No | - | 1 | ACTUATOR | AS SPECIFIED |



| SIZE | SPRING TO CLOSE | | | TFM | | | |
|--------|-----------------|-------|-------|-------|-------|-------|-------|
| | EPDM | TFM | TFM | EPDM | TFM | TFM | |
| 2 1/2" | A | HEAD | B | C | HEAD | B | C |
| | 7.63 | 175MM | 15.04 | 8.31 | 225MM | 15.27 | 10.28 |
| 3" | 8.75 | 175MM | 15.71 | 8.31 | 225MM | 15.51 | 10.28 |
| 4" | 11.50 | 225MM | 16.11 | 10.28 | 225MM | 16.11 | 10.28 |

| SIZE | SPRING TO OPEN & DOUBLE ACTING | | | TFM | | | |
|--------|--------------------------------|-------|-------|-------|-------|-------|-------|
| | EPDM | TFM | TFM | EPDM | TFM | TFM | |
| 2 1/2" | A | HEAD | B | C | HEAD | B | C |
| | 7.63 | 175MM | 15.04 | 8.31 | 225MM | 15.27 | 10.28 |
| 3" | 8.75 | 175MM | 15.71 | 8.31 | 225MM | 15.51 | 10.28 |
| 4" | 11.50 | 225MM | 16.11 | 10.28 | 225MM | 16.11 | 10.28 |

ENGINEERING APPROVAL/DATE

THE INFORMATION SHOWN ON THIS DRAWING IS PROPRIETARY TO TOP LINE PROCESS EQUIPMENT. IT IS NOT TO BE REPRODUCED, COPIED, OR TRANSMITTED IN ANY MANNER WITHOUT SPECIFIC WRITTEN PERMISSION FROM TOP LINE PROCESS EQUIPMENT.

UNLESS OTHERWISE NOTED, DIMENSIONS ARE IN INCHES. DIMENSIONS OVER 12 INCHES SHALL BE IN MILLIMETERS.

UNLESS OTHERWISE SPECIFIED, ALL DIMENSIONS ARE IN INCHES.

TOP LINE PROCESS EQUIPMENT

TITLE: 2 1/2" TO 4" ACTUATOR TABLE DRAWING

SCALE: AS SHOWN

DWG. No. 2005930

REV. 0